

You can configure the system both before or after installation. Plugwise zone heating consists of:



Adam HA (incl. Zigbee stick), this module you install at the boiler.



Radiator valves, these modules you install at all radiators (underfloor heater manifold and/or convectors) that are located in the rooms you want to equip with zone heating.



Lisa, this module you install in all rooms you want to equip with zone heating.

Follow the steps in the manual of the individual products

plugwise

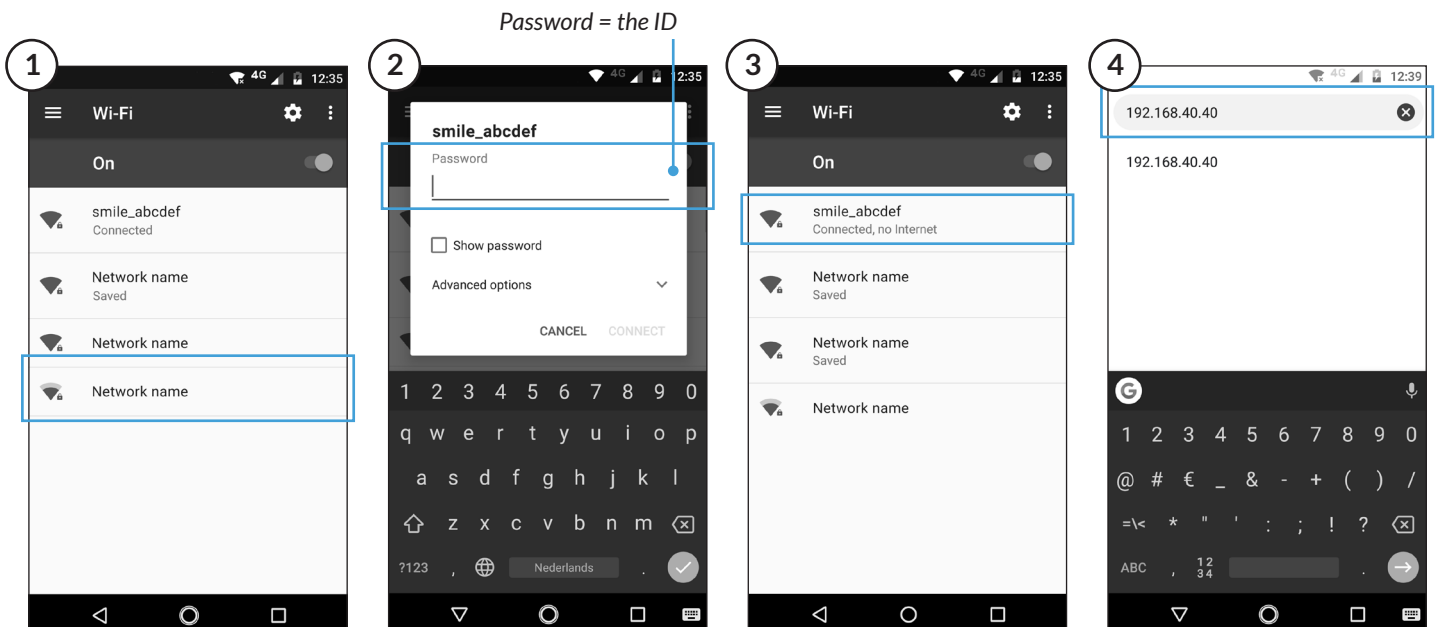
Software installation

Configuration zone heating

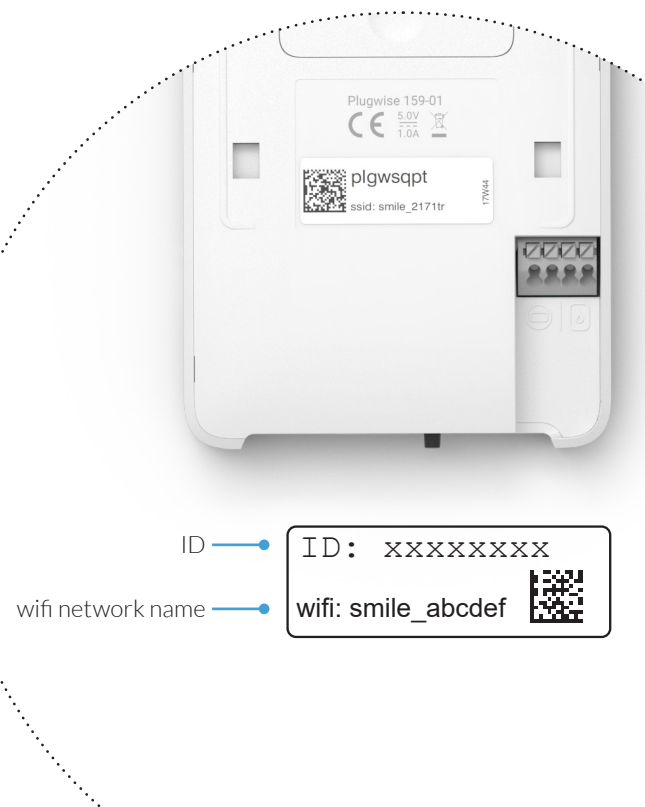
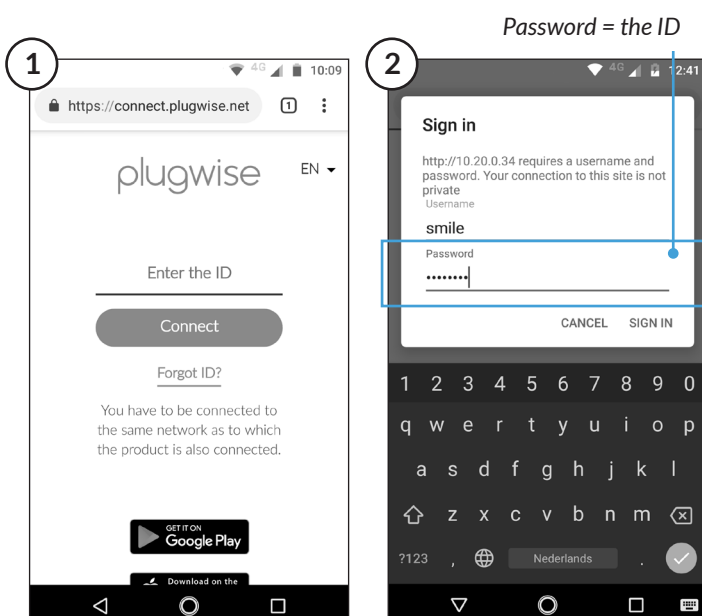
with the local web interface

Step 1 - Open the local web interface of Adam

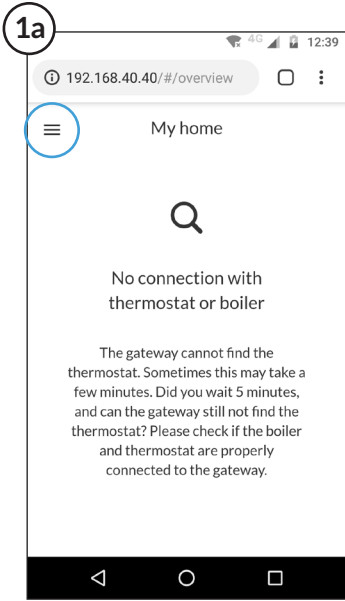
Option A - Adam is not connected to the internet



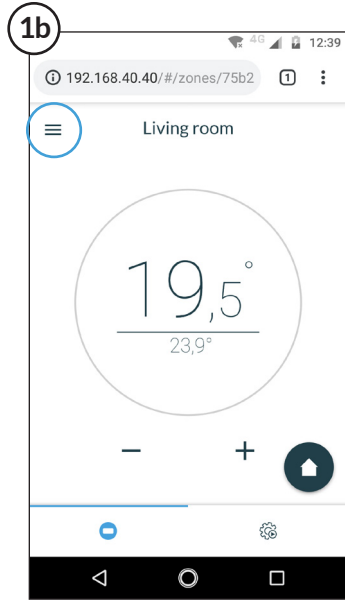
Option B - Adam is connected to the internet



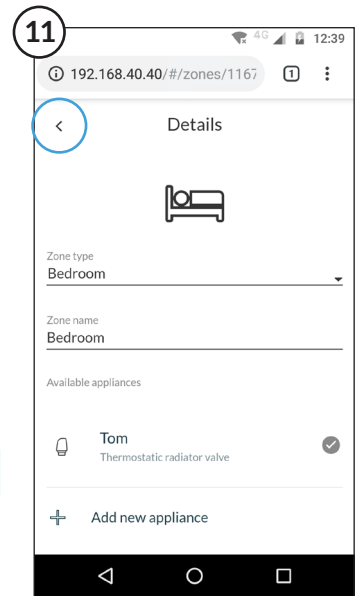
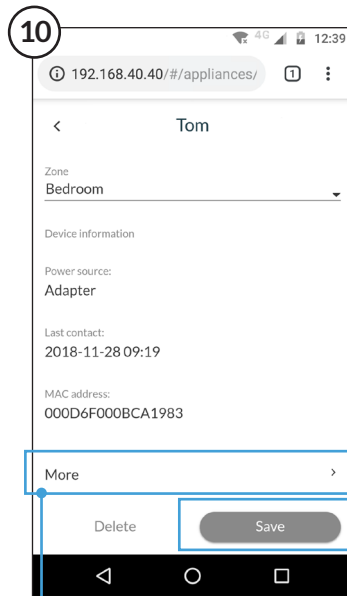
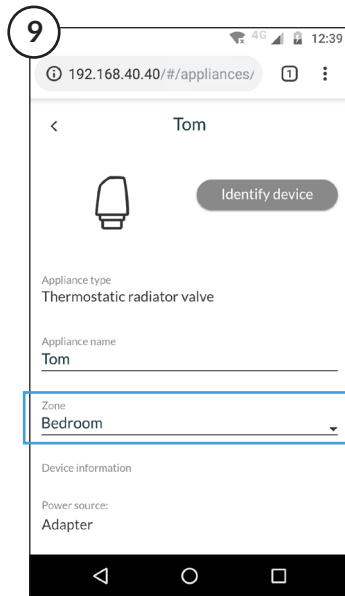
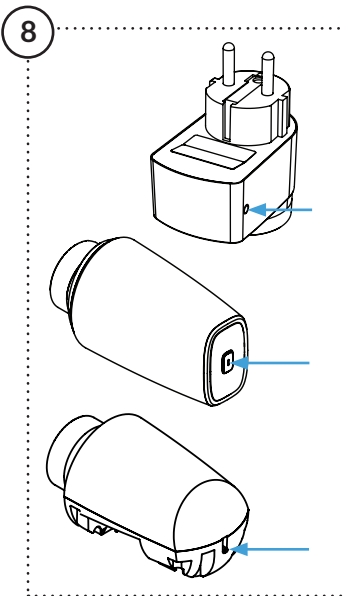
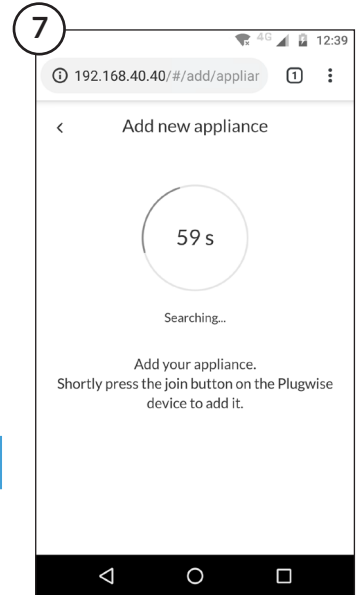
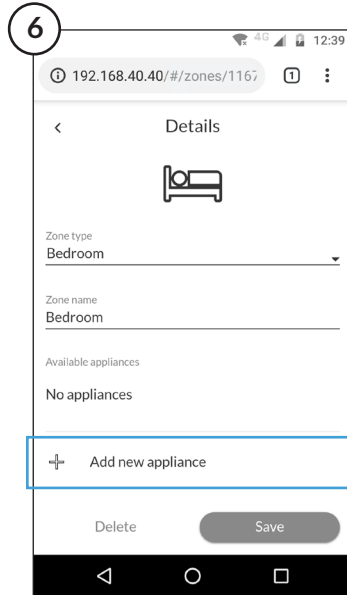
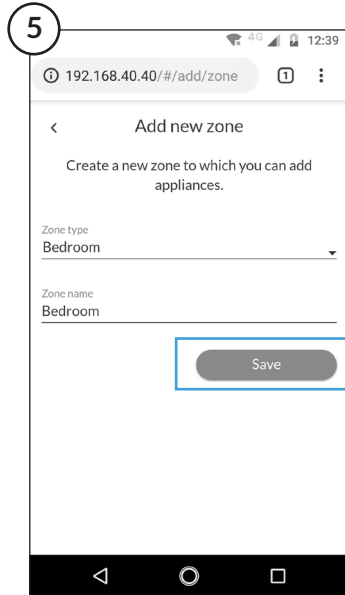
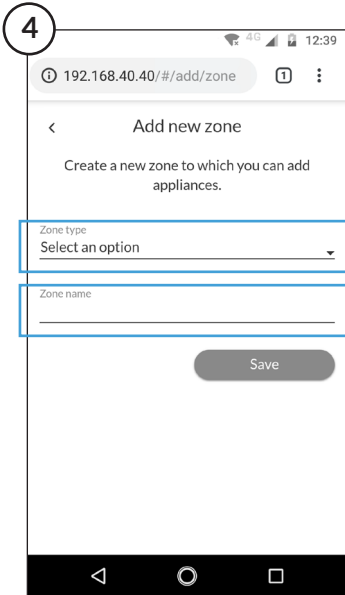
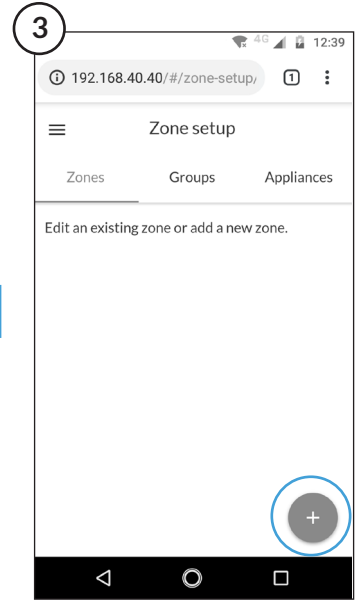
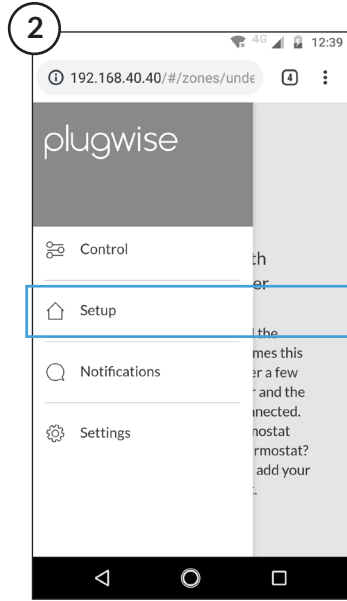
Step 2 - Configure the system in the local webinterface of Adam



Installation without an OpenTherm thermostat connected



Installation with an OpenTherm thermostat connected



Technical information and functionalities